



BOEM Bureau of
Ocean Energy Management

USET Culture and Heritage Committee

Bernard J. Howard | Tribal Coordinator

Office Environmental Programs (OEP)



Mission: To ensure that environmental protection informed by science and law is a foremost concern and an indispensable consideration in BOEM's decisions on energy and mineral development on the Outer Continental Shelf.



Office Environmental Programs (OEP)

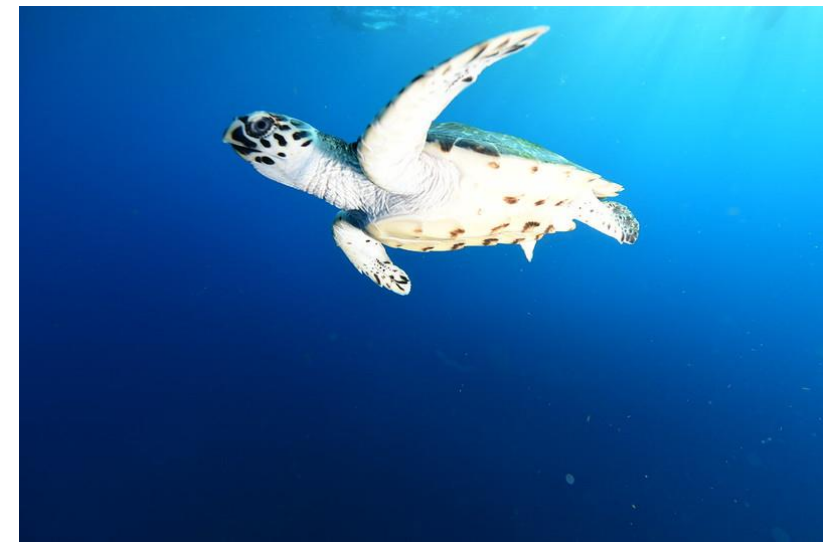


- **Informs decision-makers and the public** about the potential impacts of Outer Continental Shelf (OCS) energy, mineral, and carbon sequestration activities on the marine, coastal, and human environment
- **Integrates applied science within BOEM's environmental analyses** that support programmatic decisions and ensure environmental protection
- Plays a leading role in BOEM to address **impacts on federally recognized tribes and communities with environmental justice concerns**
- Harnesses programmatic solutions and innovations



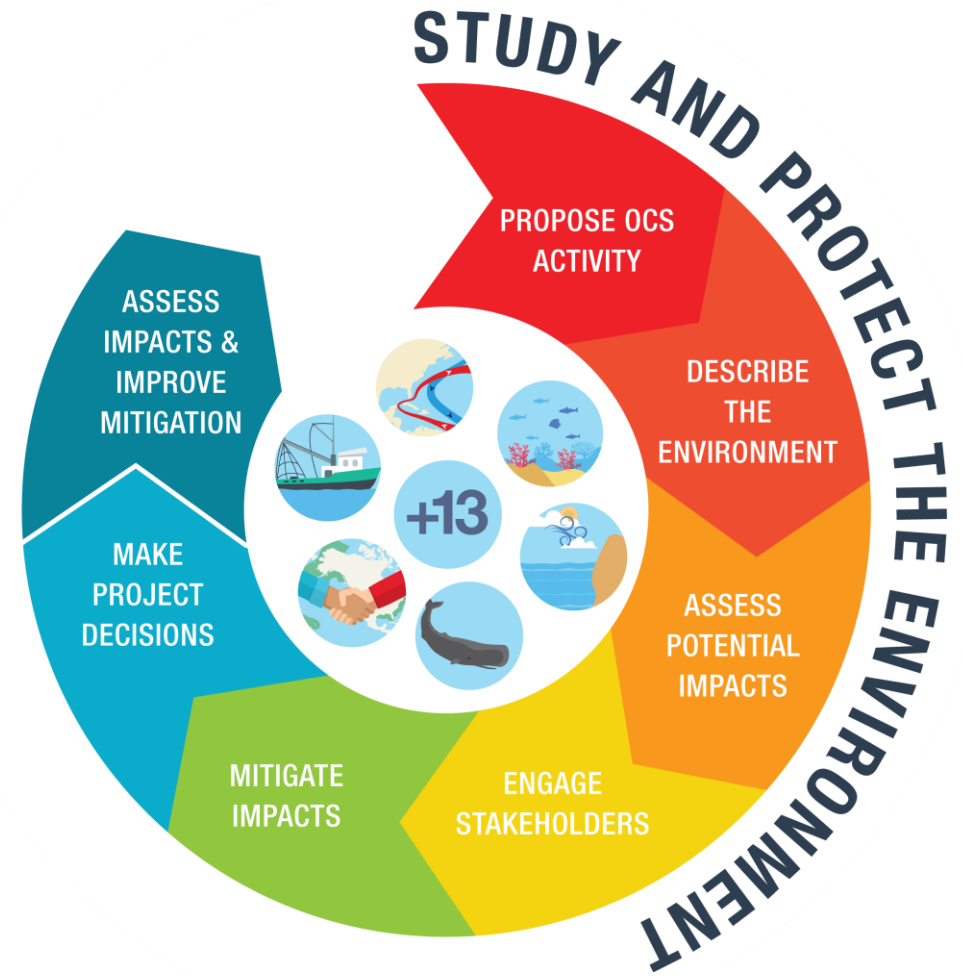
Environmental Studies

BOEM's Environmental Studies Program (ESP) provides information to predict, assess, and manage impacts from offshore energy and marine mineral exploration, development, and production activities on human, marine, and coastal environments.



Environmental Assessment

Our experts **use the best available science and Indigenous knowledge** to analyze potential impacts to multiple marine resource areas



Tribal Coordinator Role

- **Supports the information exchanges** relating to impacts expected from proposed Outer Continental Shelf energy and mineral resources activities at the National level or when concerns are elevated by the Tribes or Regional Offices.
- **Coordinates and supports Government-to-Government consultation** and related issues and makes recommendations on Bureau Tribal policy and BOEM's consultation practices.
- **Provides coordination for Tribal outreach** and consultation associated with energy-related activities; under the National Environmental Policy Act (NEPA), Executive Order 13175 – Consultation and Coordination with Indian Tribal Governments, and Departmental and Bureau policies.



Tribal Liaisons

Tribal Liaison Officer

- **Hillary Renick**
 - Hillary.Renick@boem.gov
 - 703-787-1445

Tribal Coordinator

- **Bernard Howard**
 - Bernard.Howard@boem.gov
 - 202-208-2789

Regional Tribal Liaison Representatives

Pacific Region

- **David Ball**
 - David.Ball@boem.gov
 - 805-384-6340

Gulf of Mexico Region

- **Bill Rozenweig**
 - William.Rosenzweig@boem.gov
 - 504-736-2862

Alaska Region

- **Michael Haller**
 - Michael.Haller@boem.gov
 - 907-334-5276

Atlantic Offshore Wind Liaison currently hiring. BSEE Tribal Liaison has been interim point of contact.

