

# Collaboration and Strategic Planning to Reduce and Prevent Opioid and Substance Use Disorders in Alaska

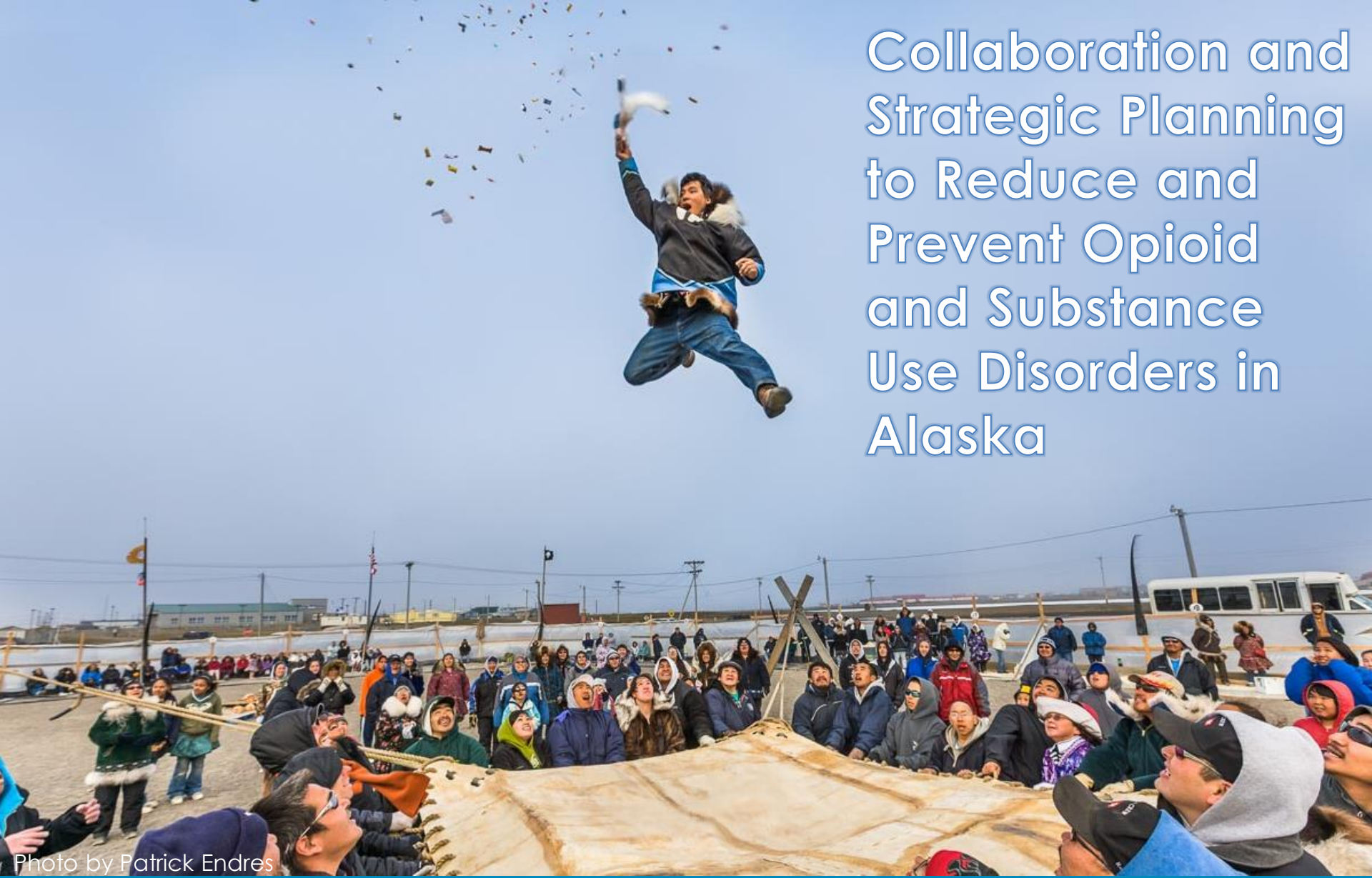
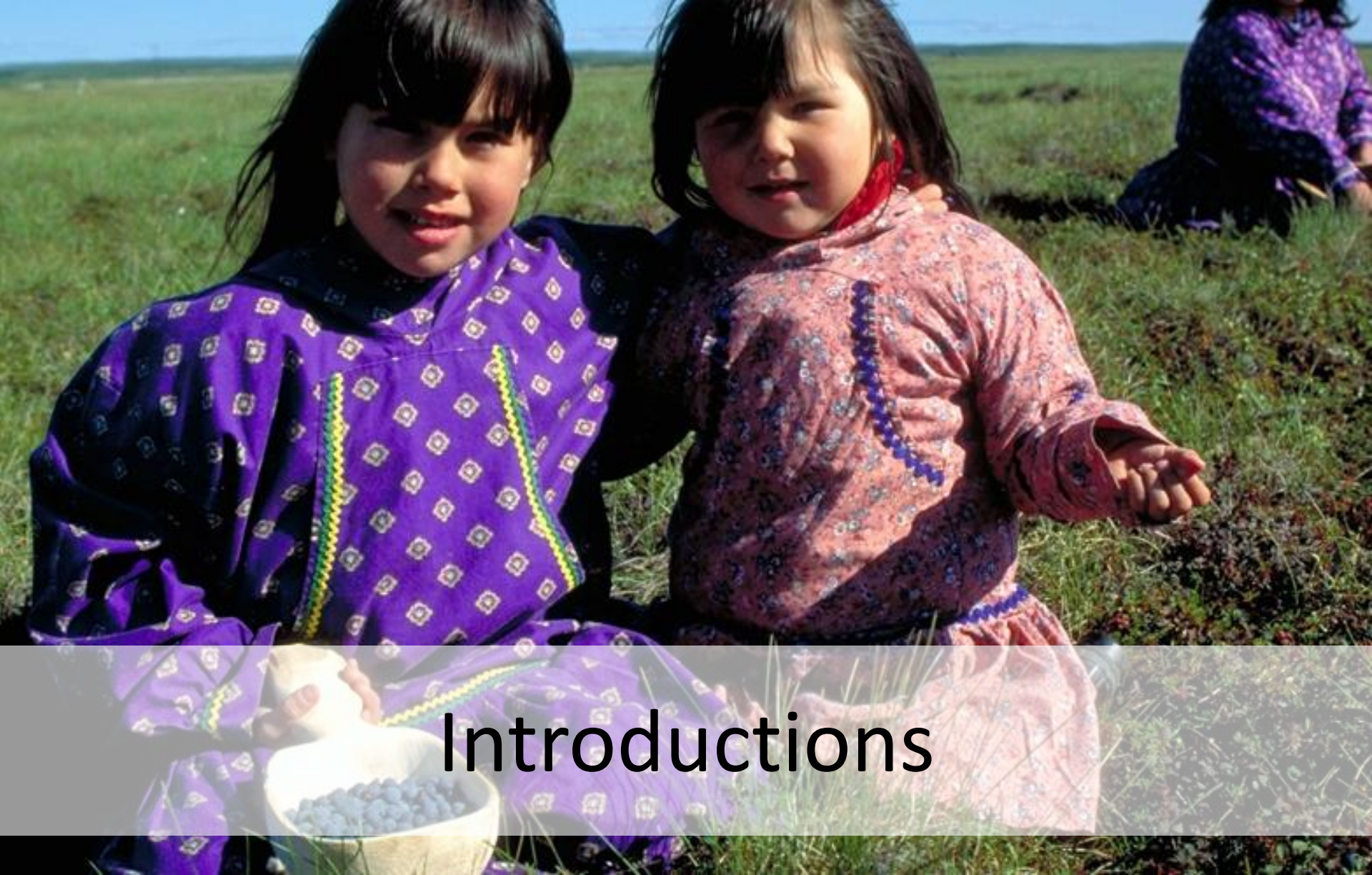


Photo by Patrick Endres

This document was supported by grant from the Centers for Disease Control and Prevention (CDC), RFA-OT18-1803, Tribal Public Health Capacity-Building and Quality Improvement, Supplement 1-NU38OT000277. Its contents are solely the responsibility of the authors and do not necessarily represent the views of the CDC.



**ALASKA NATIVE  
TRIBAL HEALTH  
CONSORTIUM**



# Introductions



ALASKA NATIVE  
TRIBAL HEALTH  
CONSORTIUM

# Learning Objectives

By the end of this session, participants will

- Describe how public health policies impact behavioral health service delivery;
- Be able to name the top six public information needs identified in the ANTHC statewide needs assessment; and
- Identify collaborative strategies to improve tribal public health systems.



# Agenda

- I. ANTHC and Alaska Tribal Health System Overview
- II. 42 CFR Part 2
- III. Alaska Tribal Statewide Needs Assessment
- IV. Collaborative Strategies
- V. Results from Strategic Planning Session
- VI. What's Next
- VII. Prize Quiz





# Alaska Native Tribal Health Consortium

*An Overview*

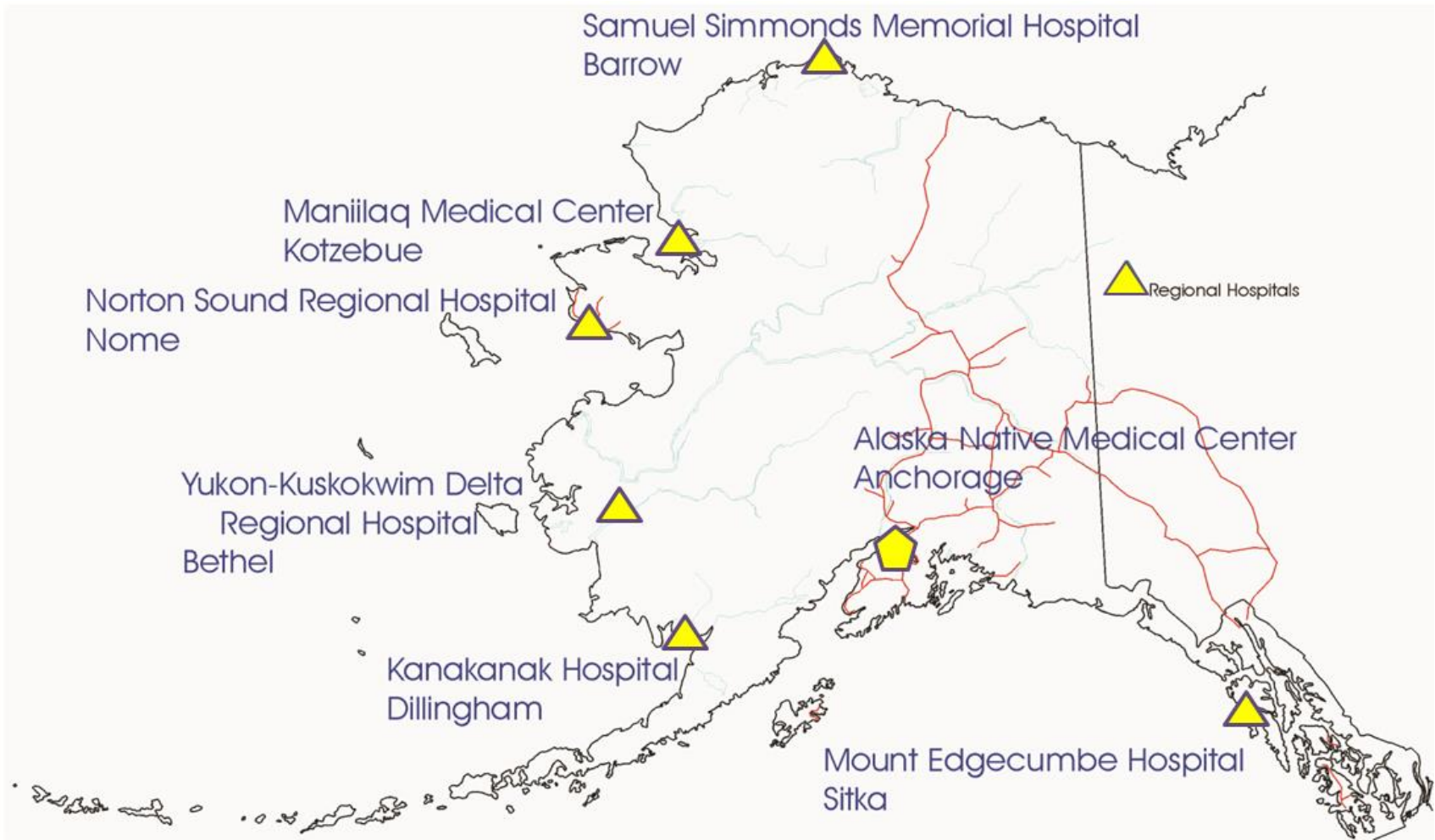


ALASKA NATIVE  
TRIBAL HEALTH  
CONSORTIUM

## **OUR VISION:**

**Alaska Native people are the healthiest people in the world.**

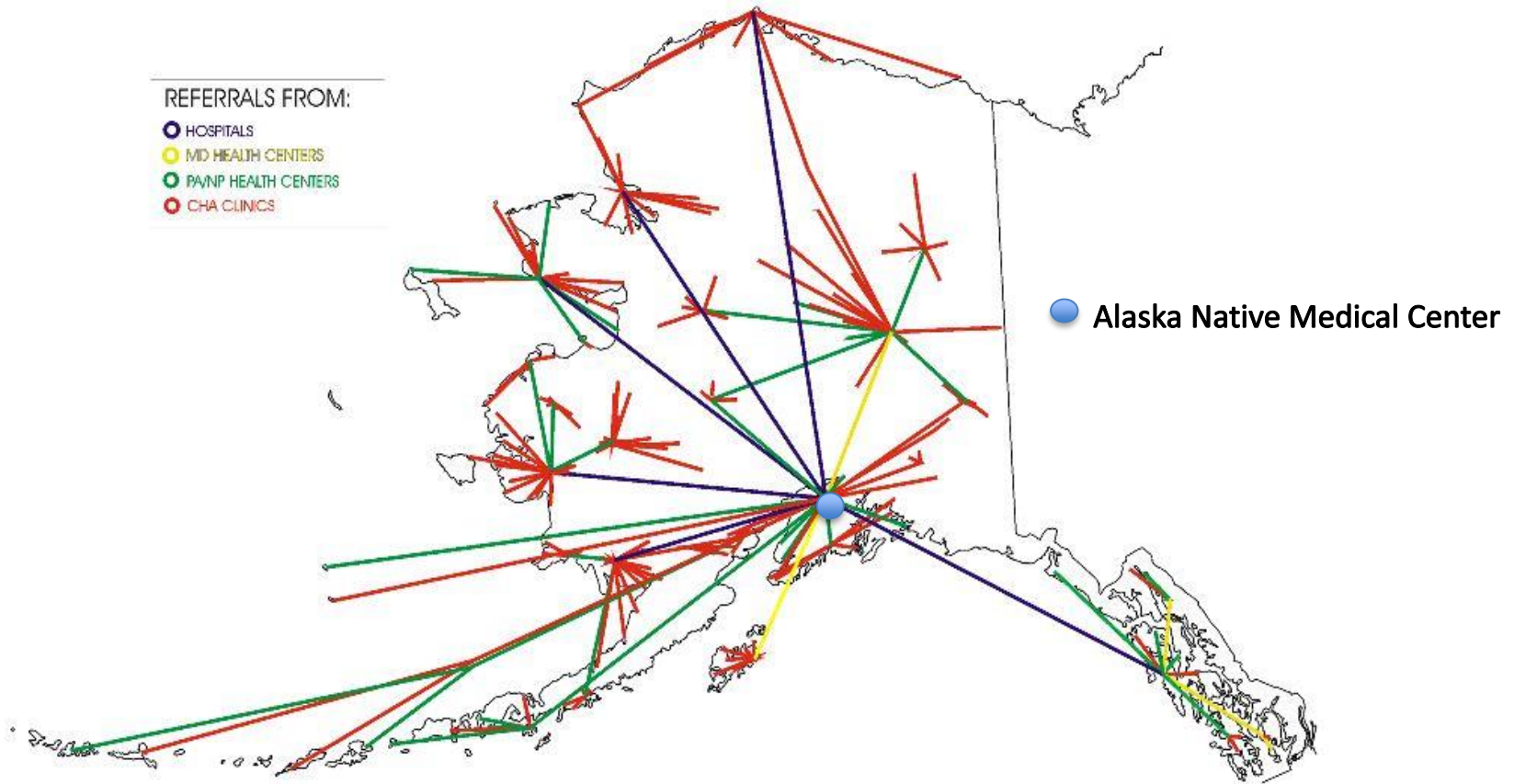
# Alaska Tribal Health System



ALASKA NATIVE  
TRIBAL HEALTH  
CONSORTIUM

# Alaska Tribal Health System (ATHS)

## Typical Referral Patterns



Map provided by  
Alaska Native Tribal Health Consortium  
Division of Information Technology  
www.athc.org

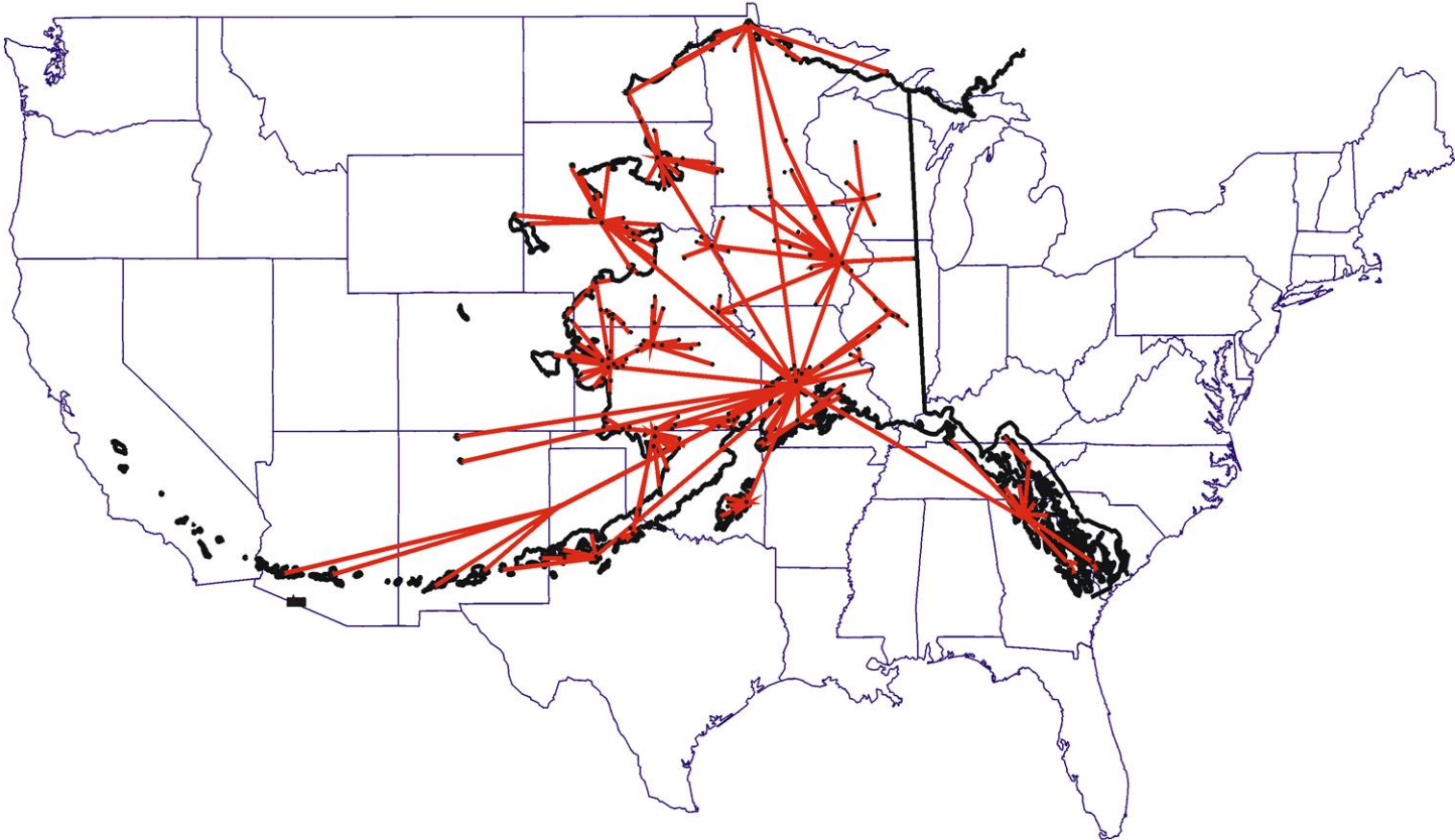


ALASKA NATIVE  
TRIBAL HEALTH  
CONSORTIUM



# THE ALASKA NATIVE HEALTH CARE SYSTEM REFERRAL PATTERN

Same Scale Comparison - Alaska Area to Lower 48 States



ALASKA NATIVE  
TRIBAL HEALTH  
CONSORTIUM



# Yukon-Kuskokwim Health Corporation Service Area Map

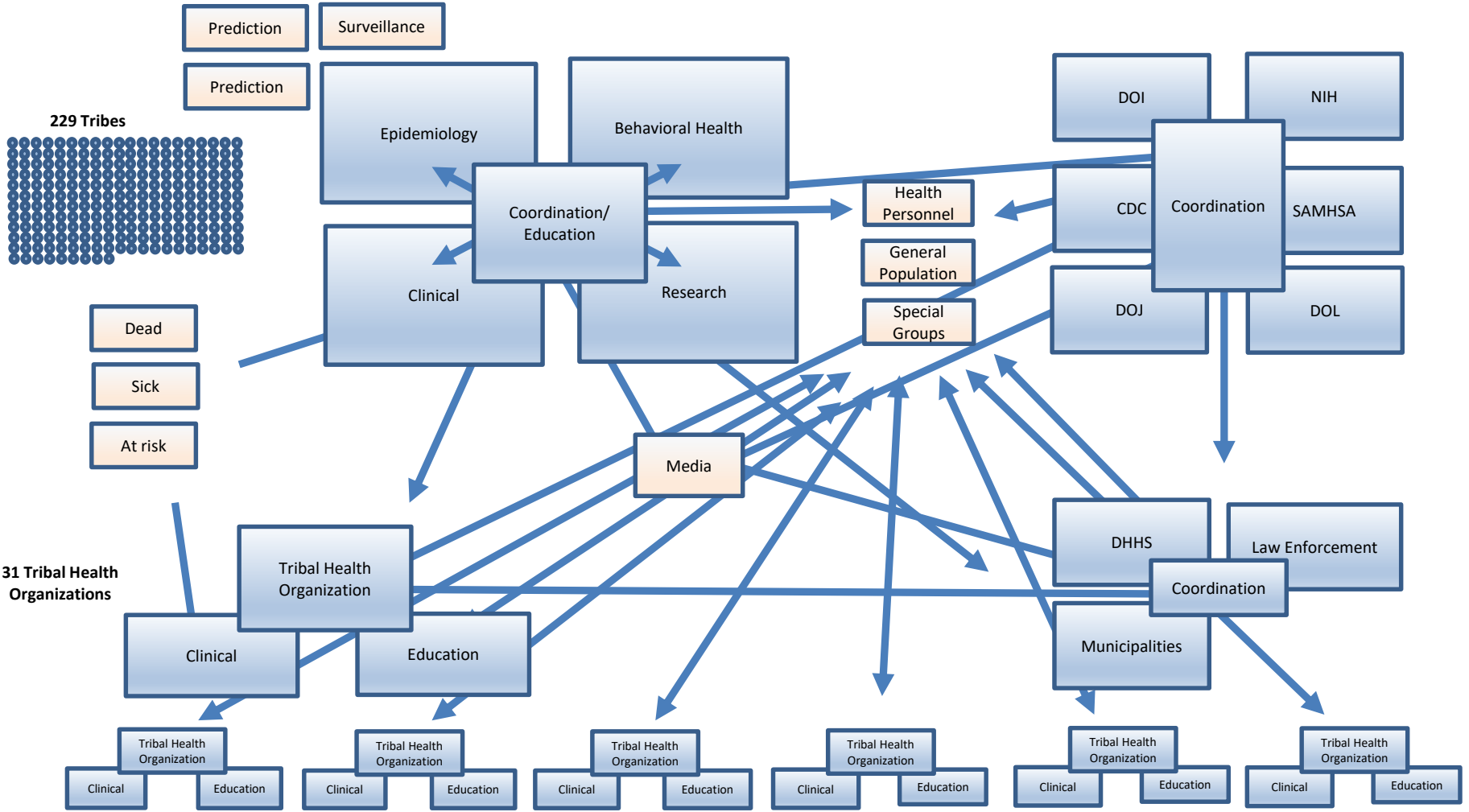




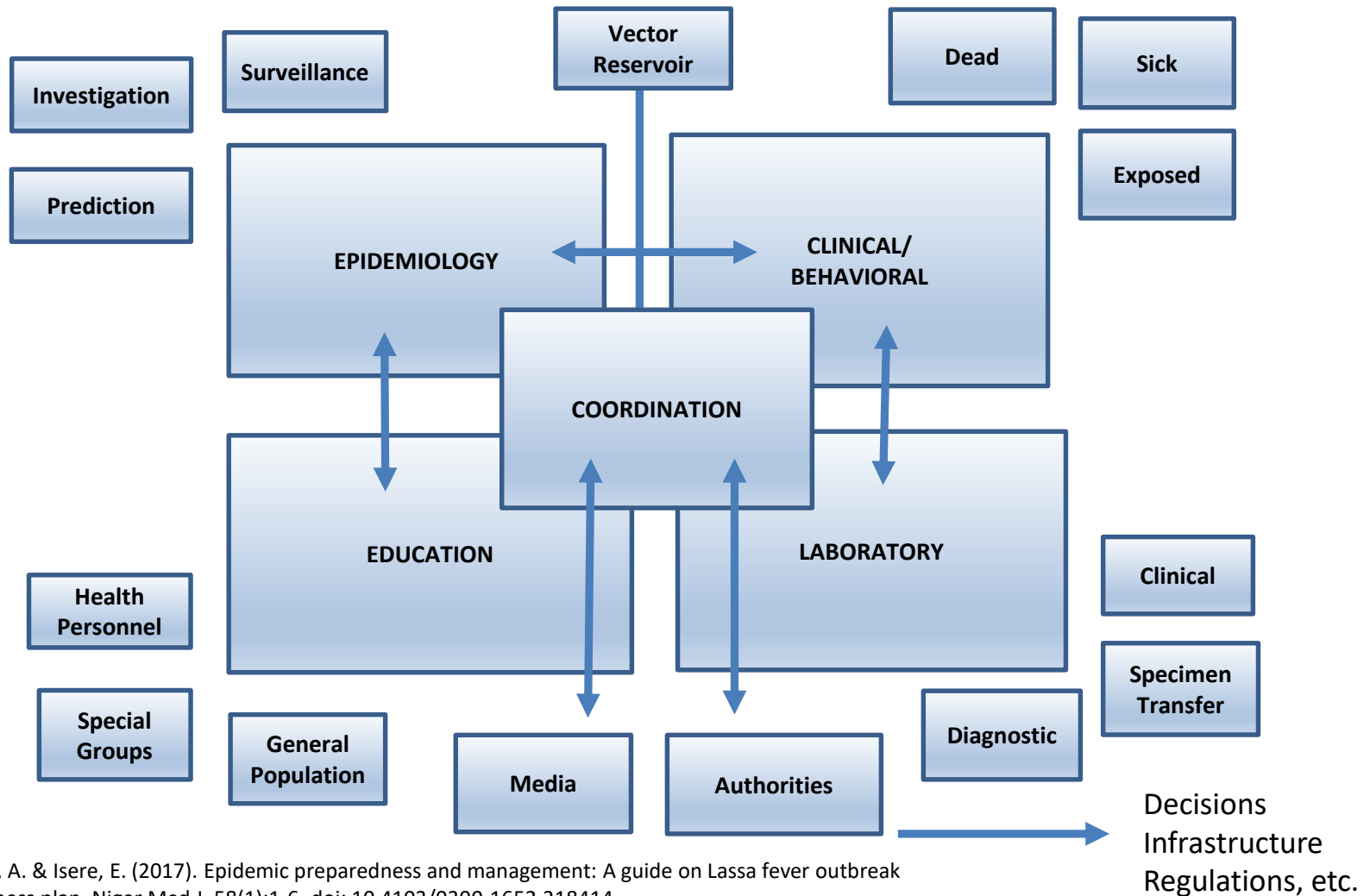
# Alaska Tribal Statewide Needs Assessment



ALASKA NATIVE  
TRIBAL HEALTH  
CONSORTIUM



# Emergency Operating Center Model



Fatiregun, A. & Isere, E. (2017). Epidemic preparedness and management: A guide on Lassa fever outbreak preparedness plan. Niger Med J. 58(1):1-6. doi: 10.4103/0300-1652.218414.

# Gap: Need for Plain Language Materials

How do opioids  
're-wire' a brain?

What causes addiction?



How do brain changes  
affect behavior?

Do brain changes stop  
people from wanting to  
end use?



# Key Messages

**EFFECT OF OPIOIDS  
ON BRAIN**

**MEDICATION  
ASSISTED  
TREATMENT**

**HOW TO GET  
TREATMENT**

**HOW TO HELP  
SOMEONE**

**CHRONIC PAIN**

**EFFECT OF LONG  
TERM USE**





## 42 CFR Part 2

*Background and Challenges*



# 42 CFR Part 2

- Purpose: to ensure privacy for individuals seeking help for drug or alcohol problems, who might otherwise be deterred from accessing services.
- Prohibits all disclosures without consent, except those specifically outlined by the regulations.

# Challenges Related to 42 CFR Part 2

- Intentionally designed to limit information sharing
- Limits collaboration



# ABC Treatment Center



**Dr. Van Buren**

# Primary Care Office



**Dr. Harrison**

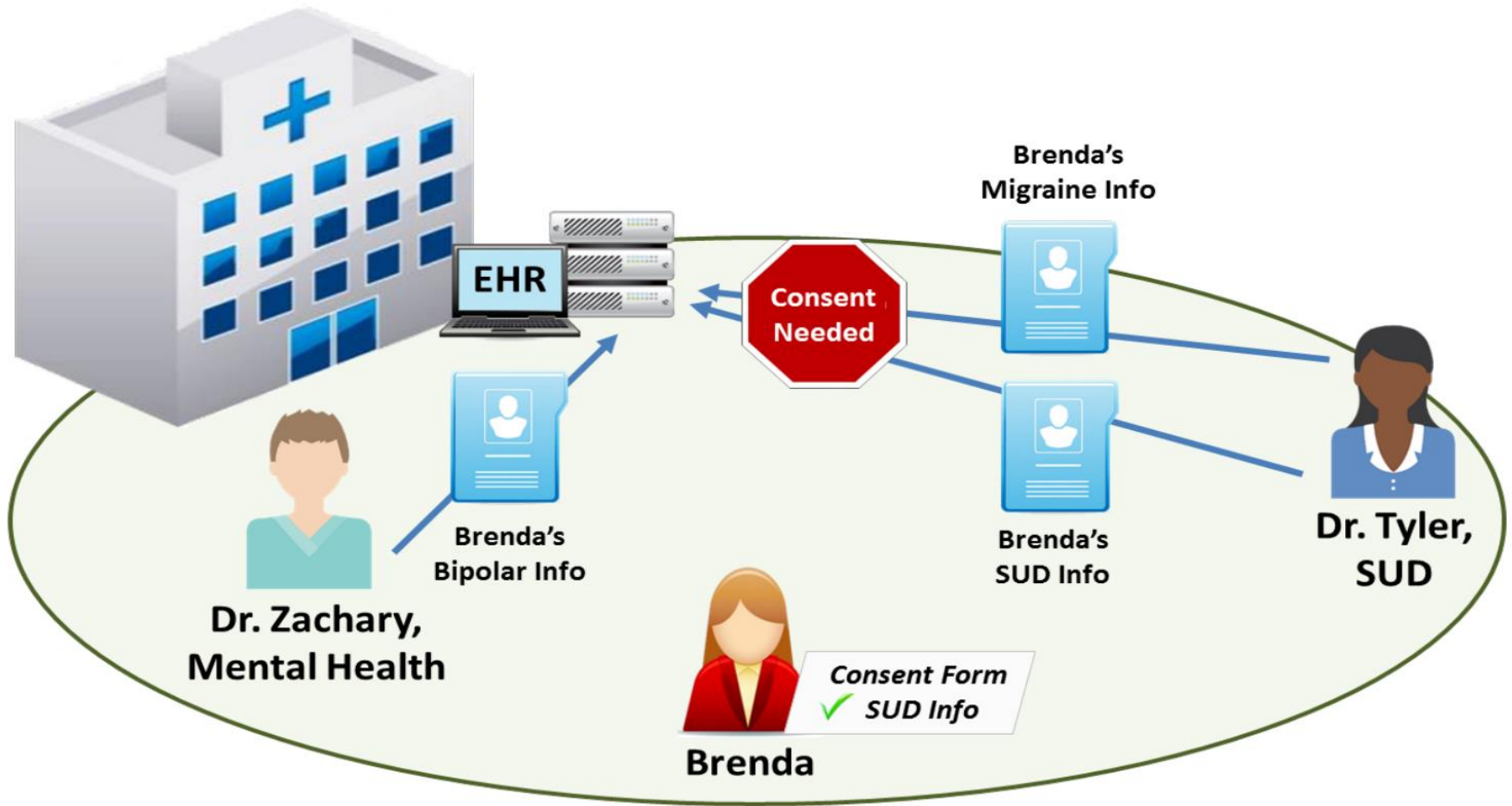
**Charlie's  
SUD Info**



**Charlie**



# Acme Community Mental Health Center





# Collaborative Strategies

Photo by Patrick Endres

# Collaborative Partners



- Regional tribal health organizations
- Native villages
- State
- Federal



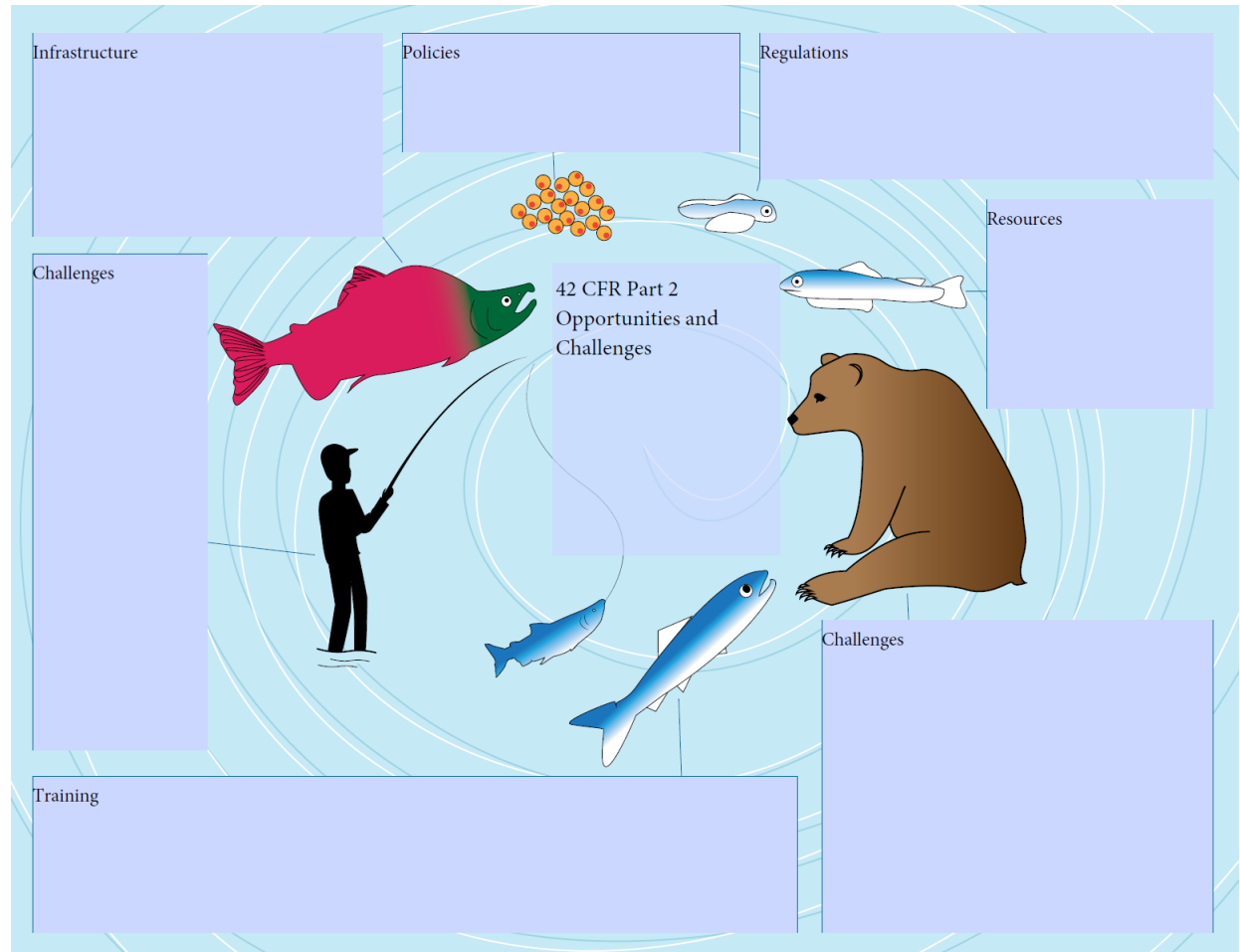
# Applying Adult Learning Principles

- Learning styles
- Communication styles
- Engagement tools
- Brain breaks



# Gamestorming

- Storyboard
- Flip It
- Speed Boat
- Carousel







## Strategic Priorities



ALASKA NATIVE  
TRIBAL HEALTH  
CONSORTIUM

# Strategic Priorities



Behavioral health workforce development among Alaska residents;



Treating root causes of addiction; and



Destigmatizing and humanizing prevention, intervention, and treatment.





# What's Next?



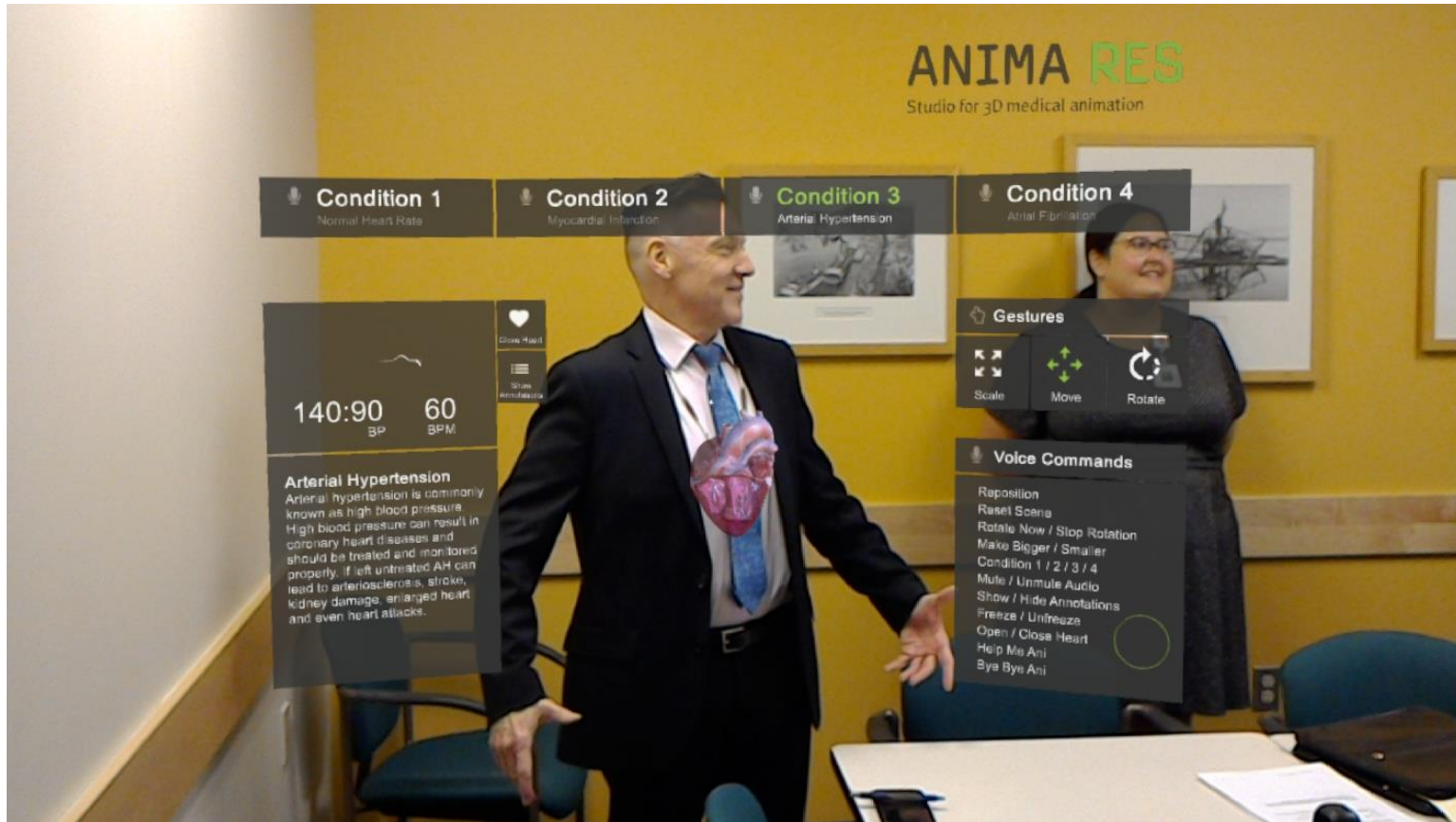
ALASKA NATIVE  
TRIBAL HEALTH  
CONSORTIUM

# Alaska Blanket Exercise



ALASKA NATIVE  
TRIBAL HEALTH  
CONSORTIUM

# HoloLens2





## Affinity Groups



ALASKA NATIVE  
TRIBAL HEALTH  
CONSORTIUM

# Learning Objectives

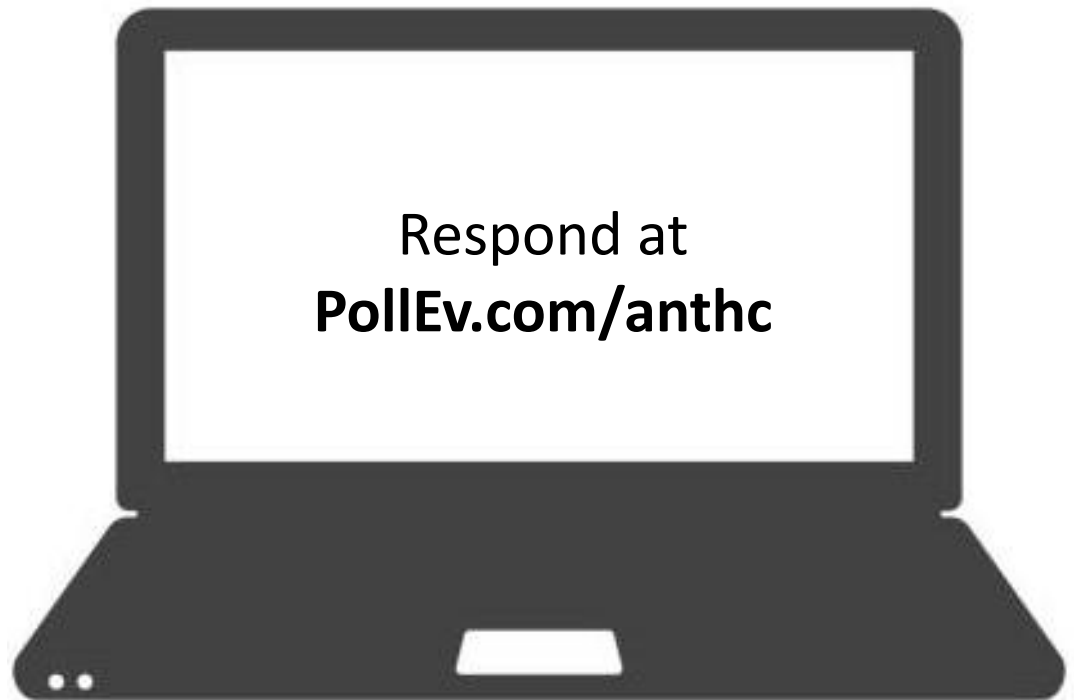
By the end of this session, participants will

- Describe how public health policies impact behavioral health service delivery;
- Be able to name the top six public information needs identified in the ANTHC statewide needs assessment; and
- Identify collaborative strategies to improve tribal public health systems.





# Poll Everywhere







**Jackie Engebretson, MSW**

Behavioral Health Program Manager

[jengebretson@anthc.org](mailto:jengebretson@anthc.org)